

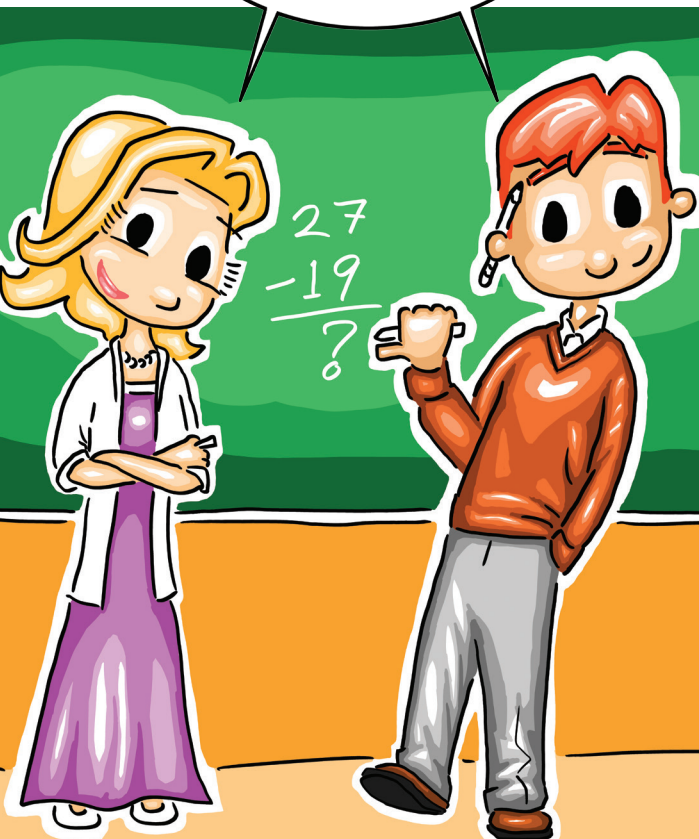
# PUBLIC SERVICE

EXPLORE YOUR FUTURE WITH THE FOUNDATION HIGH SCHOOL PROGRAM

Published by the Texas Workforce Commission  
101 E. 15th St., Rm 0252, Austin TX 78778-0001

October 2016

CAN YOU  
IMAGINE  
YOUR FACE  
HERE?



## ELEMENTARY SCHOOL TEACHER

*Jobs projected in Texas by 2024:* 172,990

*You will need:*  
a Bachelor's degree

*Typical starting pay is:*  
\$42,156 a year

*Typical average pay is:*  
\$52,813 a year

*Turnover:* Low

**Figuring out** what you want to do when you grow up is a challenge, but boy is it worth it! With the Foundation High School Program's endorsement options, you have the opportunity to explore classes and fields of study that interest you today so you can find your dream job tomorrow. In many of these courses, you will even get to experience what it's like to work in the jobs that interest you.

Remember: you have options, probably more than you have ever considered. If you value long-term relationships with the people you serve, you might consider being a teacher or a coach. If you're interested in law enforcement, you can be a Police Officer, Detective, or a Forensic Science Technician. If you are more interested in the judicial side of the law, you can be a Lawyer, Hearings Officer, Paralegal, Bailiff, or Court Reporter, for example.

So go exploring! Research your endorsement and career interest options before deciding which paths to pursue. The decisions you make about your education today will affect how well you enjoy your job in the future, how much money you earn, your future lifestyle, and so much more. So think it through, plan your future, and have fun!

## ***WHAT IS THE FOUNDATION HIGH SCHOOL PROGRAM?***

The ***Foundation High School Program*** is a detailed plan of 22 credits that you and all your classmates will have to earn in order to graduate from high school. See page 4 for details.

An ***endorsement*** is an option you can add to your high school diploma to show your knowledge and/or skills gained in one of five broad subject matter areas: STEM, Arts and Humanities, Business and Industry, Public Services, and Multidisciplinary Studies. To get an endorsement, you must complete a logical sequence of specific courses approved by your district.

***If you have questions about which endorsement would be best for you, talk to your school Counselor!***

## FIREFIGHTER

*Jobs projected in Texas by 2024:* 33,110

*You will need:*  
Long-term training

*Typical starting pay is:*  
\$31,427 a year

*Typical average pay is:*  
\$49,583 a year

*Turnover:* Low



So ... you think you might want to select the Public Service Foundation High School Program endorsement option? Awesome! Browse through some of the data for job titles found under the Public Service endorsement in this booklet to help you decide if this is the right educational and career path for you. For more information on jobs in this career field, you can:

1. Call our **24-hour Hotline at 1-800-822-PLAN (7526)**
2. Go to Texas Career Check and click “Explore Careers” at [www.texascareercheck.com](http://www.texascareercheck.com)
3. Visit the LMCI website to see what available products may best serve your needs: [www.texasworkforce.org/labormarket](http://www.texasworkforce.org/labormarket)

**We hope** that by learning all you can about potential careers in the fields that interest you, you will be empowered to find a career that you love, and that also pays for you to live the way you want once you are living on your own. So enjoy this booklet, explore some options, and don't hesitate to talk to your parents, family, friends, teachers, counselors, and us at the Texas Workforce Commission if you have questions about your career goals.

**Public Service occupations can be found in all of the following Achieve Texas career clusters.**



## ***Sample Public Service Occupations by Emphasis***

Below are sample occupations under the Public Service endorsement. Not all Public Service-related occupations are included here (there are hundreds), and some of those listed below may fall under other endorsements as well. Talk to your school Counselor for more information.

Health Science; Agriculture, Food, & Natural Resources; and Business Management Career Clusters		
Agriculture Sciences Teacher	Cardiovascular Technologists	Court, Municipal, & License Clerks
Anesthesiologists	Chiropractors	Diagnostic Medical Sonographers
Athletic Trainers	Court Reporters	Epidemiologists
Audiologists	Dental Assistants	Fish & Game Wardens
Human Services, Architecture & Construction, and Arts, A/V & Communications Career Clusters		
Barbers	Credit Counselors	Child, Family, & School Social Workers
Childcare Workers	Embalmers	Hairdressers, Hairstylists, & Cosmetologists
Clergy	Marriage & Family Therapists	Laundry & Dry-Cleaning Workers
Community Health Workers	Mental Health Counselors	Morticians, Undertakers, & Funeral Directors
Education & Training, Hospitality & Tourism, and Finance Career Clusters		
Archivists	Instructional Coordinators	Adult Basic Education Literacy teachers
Coaches and Scouts	Education/Guidance Counselors	Audio-Visual & Multimedia Collections Specialists
Curators	Personal Financial Advisor	Career/Technical Education Teachers
Education Administrators	Teacher Assistants	Clinical, Counseling, & School Psychologists
Government & Public Administration, STEM, and Transportation & Logistics Career Clusters		
Compliance Officers	Tax Examiners	Detectives & Criminal Investigators
Economists	Transportation Inspectors	Eligibility Interviewers, Government Programs
Financial Examiners	Urban & Regional Planners	Appraisers & Assessors of Real Estate
Legislators	Dispatchers	Engineering Teachers
Law, Safety, Corrections, & Security Career Clusters		
Administrative Law Judges	Forensic Science Technicians	Emergency Management Directors
Animal Control Workers	Lawyers	Emergency Medical Technicians & Paramedics
Bailiffs	Judicial Law Clerks	Judges, Magistrate Judges, & Magistrates
Correctional Officers & Jailers	Paralegals & Legal Assistants	Police & Sheriff's Patrol Officers

### ***Keep in Mind***

The career titles listed above are just a fraction of the possible occupation opportunities available within this endorsement area, so be sure to visit TWC's AutoCoder website to find other job titles that may interest you: <http://autocoder.lmci.state.tx.us>.

- Just enter a job title or a description in the appropriate search box, and you will get a list of the most common title matches.
- Click on the title that best matches the job that interests you, and a catalog of other, closely-related (or interchangeable) job titles will appear.

## ***Your Foundation High School Program Graduation Requirements***

This table shows what every Texas student needs to graduate. Every student must earn the 22 credits under the “Foundation-Only” column. Your parents or guardians will need to give the school district written permission to allow you not to earn an endorsement. Otherwise you must pick an endorsement and earn 26 credits to graduate. Remember that your school district has the authority to establish requirements in addition to those listed here. Check with your school Counselor for more information.

Subjects and courses required for Foundation-Only Credits	Foundation-Only Credits	Foundation + Endorsement Credits	Distinguished Level Credits
<b>English</b> <ul style="list-style-type: none"> <li>• English I, II, and III</li> <li>• Advanced English course</li> </ul>	4	4	4
<b>Mathematics</b> <ul style="list-style-type: none"> <li>• Algebra I</li> <li>• Geometry</li> <li>• Advanced Math course</li> </ul>	3	4 - All Foundation requirements, plus additional advanced Math course	4 - All Foundation requirements, plus Algebra II specifically
<b>Science</b> <ul style="list-style-type: none"> <li>• Biology</li> <li>• Integrated Physics and Chemistry</li> <li>• Advanced Science course</li> </ul>	3	4 - All Foundation requirements, plus additional advanced Science course	4 - All Foundation requirements, plus additional advanced Science course
<b>Social Studies</b> <ul style="list-style-type: none"> <li>• U.S. History</li> <li>• U.S. Government (1/2 credit)</li> <li>• Economics (1/2 credit)</li> <li>• World History or Geography</li> </ul>	3	3	3
<b>Physical Education</b>	1	1	1
<b>Languages other than English</b> <ul style="list-style-type: none"> <li>• Two credits in the same language</li> <li>• OR two credits from Computer Science I, II, and III</li> </ul>	2	2	2
<b>Fine Arts</b>	1	1	1
<b>Electives</b> <ul style="list-style-type: none"> <li>• Classes available for electives will be based upon the endorsement options selected by the student.</li> </ul>	5	7	7
<b>Speech</b> <ul style="list-style-type: none"> <li>• Demonstrated proficiency</li> </ul>	0	0	0
<b>Total Credits</b>	<b>22</b>	<b>26</b>	<b>26</b>

Students can earn one or more Performance Acknowledgments, in addition to any graduation program they follow, for any of the following areas: Dual Credit course; Advanced Placement or International Baccalaureate exam performance; Bilingualism and biliteracy; Earning a nationally or internationally recognized business or industry certification or license; PSAT, ACT-PLAN, SAT, or ACT score. Talk to your school Counselor for specific guidelines.



## Your Public Service Endorsement Options

Students interested in earning the Public Service endorsement have several options. Once you've met your Foundation graduation requirements, you will need to successfully complete additional advanced courses in math and science (one each), plus electives, and choose **one** of the two options below to earn your remaining Public Service endorsement credits.

1. Complete consecutive levels [For example: **Principles of Human Services** followed by **Travel and Tourism** or **Introduction to Education** followed by **Ready Set Teach I**] of four or more CTE (Career Technical Education) courses with the first two of them being from the same career cluster.
  - a. The third CTE credit must be from an advanced course
  - b. The fourth CTE credit must come from a class in one of the following career clusters:
    - Education and Training
    - Government and Public Administration
    - Health Science
    - Human Services
    - Law, Public Safety, Corrections, and Security
2. Complete four courses in **Junior Reserve Officer Training Corps (JROTC)**.

### EMERGENCY MEDICAL TECHNICIAN

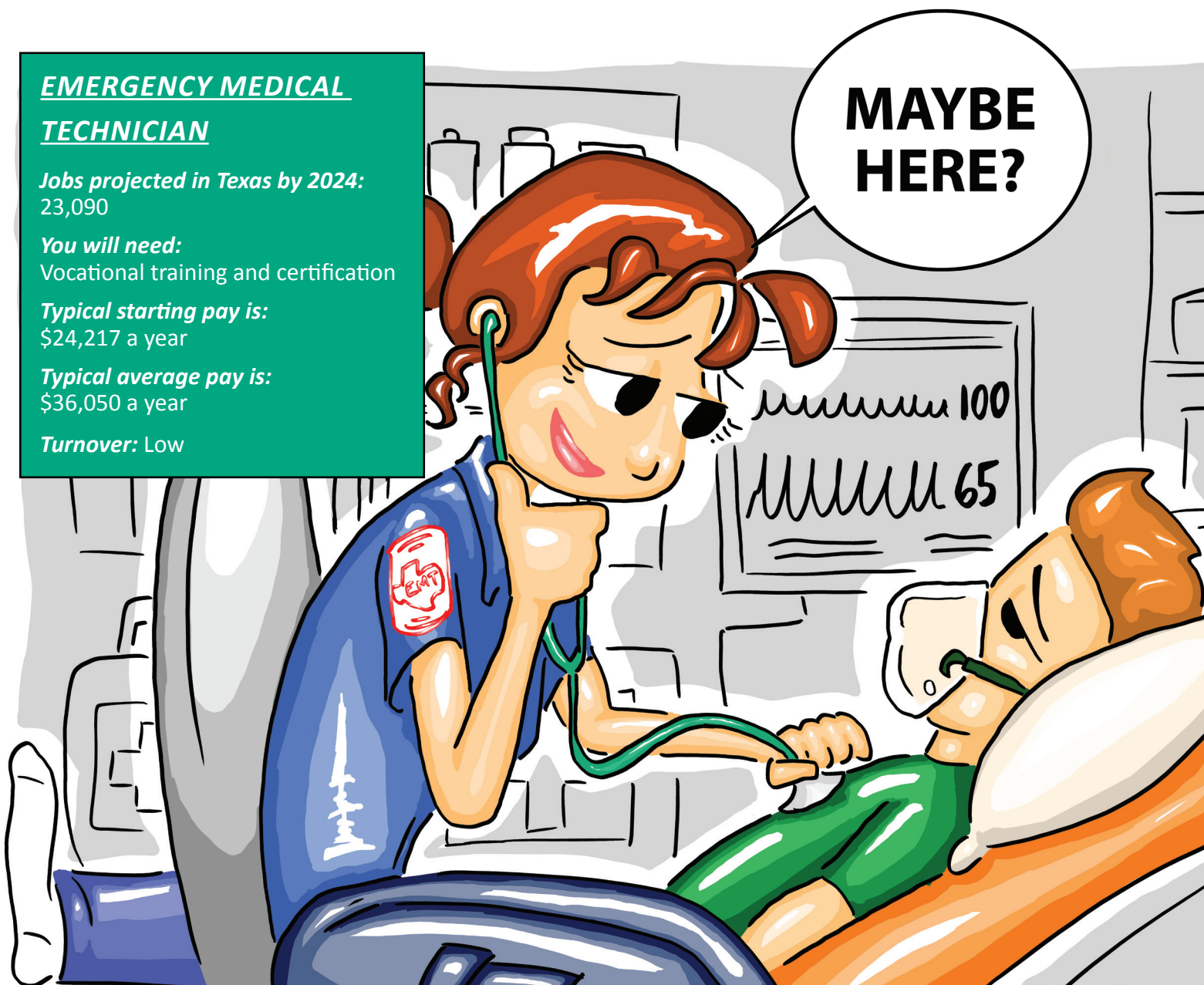
*Jobs projected in Texas by 2024:*  
23,090

*You will need:*  
Vocational training and certification

*Typical starting pay is:*  
\$24,217 a year

*Typical average pay is:*  
\$36,050 a year

*Turnover:* Low





## DETECTIVE AND CRIMINAL INVESTIGATOR

*Jobs projected in Texas by 2024:* 19,460

*You will need:* High school diploma minimum

*Typical starting pay is:* \$45,583 a year

*Typical average pay is:* \$73,651 a year

*Turnover:* Low

**ANYWHERE  
HERE?**

## REGISTERED NURSE

*Jobs projected in Texas by 2024:*  
258,880

*You will need:*  
a Bachelor's degree

*Typical starting pay is:*  
\$52,097 a year.

*Typical average pay is:*  
\$69,891 a year.

*Turnover:* Low



## The Real Deal

### Using Labor Market Statistics to Filter through Career Options

It is important to think about how much money you'll earn in any given occupation. But you should consider many other labor market statistics to help you make informed choices.

Check out the information and numbers below for a few jobs in the Public Service fields to see other important statistics you can discover on the Texas Career Check website. Use this information to help you determine what's important to you in a career.

### **Radiologic Technologist**

You will: Take x rays and CAT scans or administer nonradioactive materials into patient's blood stream for diagnostic purposes. Includes technologists who specialize in other scanning modalities.

- Employment is projected to grow faster than average; those with knowledge of more than one diagnostic imaging procedure will have the best employment opportunities.
- Formal training programs in radiography are offered in hospitals or colleges and universities and lead to a certificate, an associate degree, or a bachelor's degree.

Projected state employment for 2024	19,120
Education needed:	Associate Degree
2015 Average Annual Wage	\$55,575
Turnover:	Very Low

### **Community Health Workers**

You will: Help individuals and communities adopt healthy behaviors. Conduct outreach for medical personnel or health organizations.

- May provide information on available resources, provide social support and informal counseling.
- May collect data to help identify community health needs.

Projected state employment for 2024	4,900
Education needed:	High School diploma, plus short-term on-the-job training
2015 Average Annual Wage	\$39,245
Turnover:	Low

### **Librarians**

You will: Administer libraries and perform related library services. Work in a variety of settings, including public libraries, educational institutions, corporations, law firms, healthcare providers, and more.

- A Master's degree in library science is required for most librarian positions. School librarians also often need to meet State teaching license requirements.
- Job opportunities are expected to be favorable, as a large number of librarians are likely to retire in the coming decade.

Projected state employment for 2024	12,200
Education needed:	Master's Degree
2015 Average Annual Wage	\$57,010
Turnover:	Low



**WANT INFORMATION ON  
MORE JOBS?**

Check out  
[www.TexasCareerCheck.com](http://www.TexasCareerCheck.com)  
to learn about hundreds  
more Public Service careers!  
**EXPLORE YOUR FUTURE!**

**CHILD & FAMILY  
SOCIAL WORKERS**

*Jobs projected in Texas by 2024:* 19,440

*You will need:*  
a Bachelor's degree or higher

*Typical starting pay is:*  
\$32,666 a year

*Typical average pay is:*  
\$41,758 a year

*Turnover:* Low



TEXAS WORKFORCE COMMISSION  
Labor Market and Career Information  
101 E. 15th St., Room 0252  
Austin, TX 78778-0001  
866-938-4444 toll free  
Fax: 512-936-3208  
[www.texasrealitycheck.com](http://www.texasrealitycheck.com)  
[www.texasworkforce.org](http://www.texasworkforce.org)  
email: [lmci@twc.state.tx.us](mailto:lmci@twc.state.tx.us)

Equal Opportunity Employer/Program. Auxiliary aids and services are available upon request to individuals with disabilities.  
Relay Texas: 800-735-2989 (TTY) and 711 (Voice).

**CAN YOU  
IMAGINE  
YOUR FACE  
HERE?**

